

CRYSTAL REPORTS SERVER 2008 DATASHEET

Key Benefits

Securely view, share, schedule, and deliver reports designed in Crystal Reports 2008.

Give all end-users access to interactive reports.

Embed the latest corporate data in Microsoft Office documents.

Explore report data interactively and even offline with the standalone Crystal Reports Viewer.

Leverage the intuitive central management console.

Gain ease of scalability with a more flexible licensing model.

MANAGE, SHARE, AND DELIVER CRITICAL BUSINESS REPORTS

Crystal Reports® Server 2008 software from Business Objects, an SAP company, is a complete report management solution that allows departments and small to mid-size organizations to securely view, print, share, schedule, and deliver interactive reports via email, portals, and Microsoft Office applications. Crystal Reports Server 2008 is fully compatible with Crystal Reports 2008 and supports all of the new features of this report design tool.*

MANAGE REPORTS

Report Publishing Wizard

The report publishing wizard helps you to easily publish multiple Crystal reports to the Web, providing a step-by-step guide to configuring and uploading files.

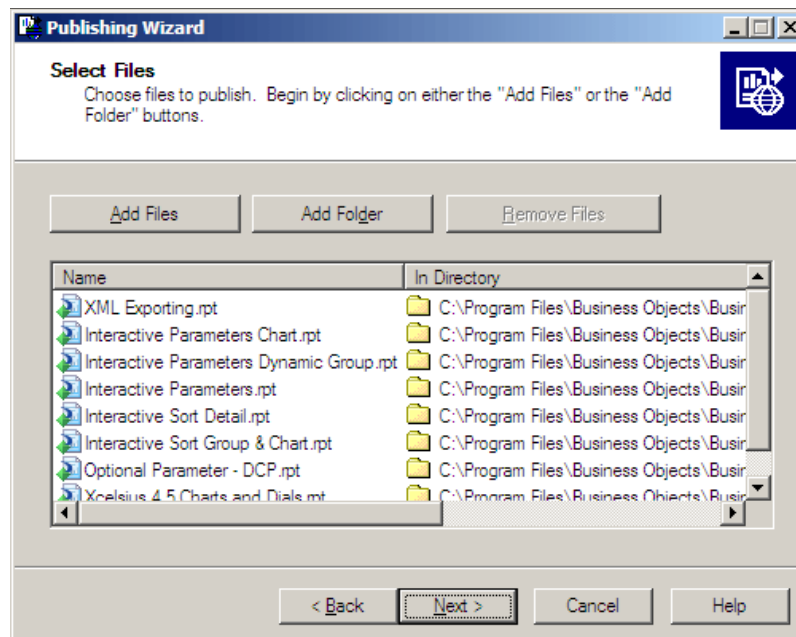


Figure 1: Report Publishing Wizard – Administrator Interface

Central Management Console

With a newly redesigned and more intuitive user interface, the central management console (CMC) is a 100% Web-based environment for centralized system management, deployment, and configuration. The CMC ensures greater flexibility and a higher granularity level to administrators managing reporting deployments. It now also includes the instance manager, which lets you manage job scheduling.

* Crystal Reports 2008 named user license not included with Crystal Reports Server 2008

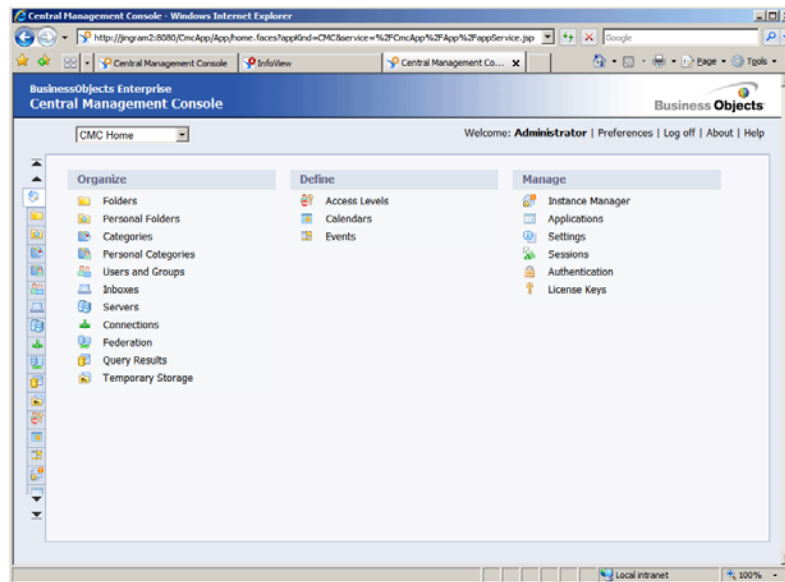


Figure 2: Central Management Console – Administrator Interface

Central Configuration Manager

The central configuration manager (CCM) is designed exclusively for the server management and configuration of the Crystal Reports Server services. This tool allows you to start, stop, enable, and disable servers. It also allows you to view and configure advanced server settings.

Security Options

Give the right people access to the right information at the right time with robust security options for user, group, object, and folder levels.

Server Intelligence

This new capability allows organizations to clone server deployments, optimize default settings for servers, and monitor platform services.

Custom Access Levels

Tailor group rights for targeted users, reducing the complexity of security management. Administrators can create and maintain access levels that are customized to their deployment and security needs. By creating groups of rights that users frequently need, administrators can set common security levels quickly and uniformly

System Management

The central management server (CMS) is a key platform service responsible for maintaining a database of information about the Crystal Reports Server system. The CMS data includes information on users and groups, security levels, and reports.

INTERACTIVE REPORTS

Zero-Client User Interface

Give end users instant, secure access to corporate reports over the Web with a single URL. Deploy the out-of-the-box portal or customize it using a portal integration kit.

InfoView to Navigate and Organize

InfoView is a complete, production-ready Web portal that enables end users to access, view, and interact with their reports (.rpt files).

Interactive Report Viewers

Print, export, and drill down on charts and other report objects, and conduct conditional searches within reports over the Web.

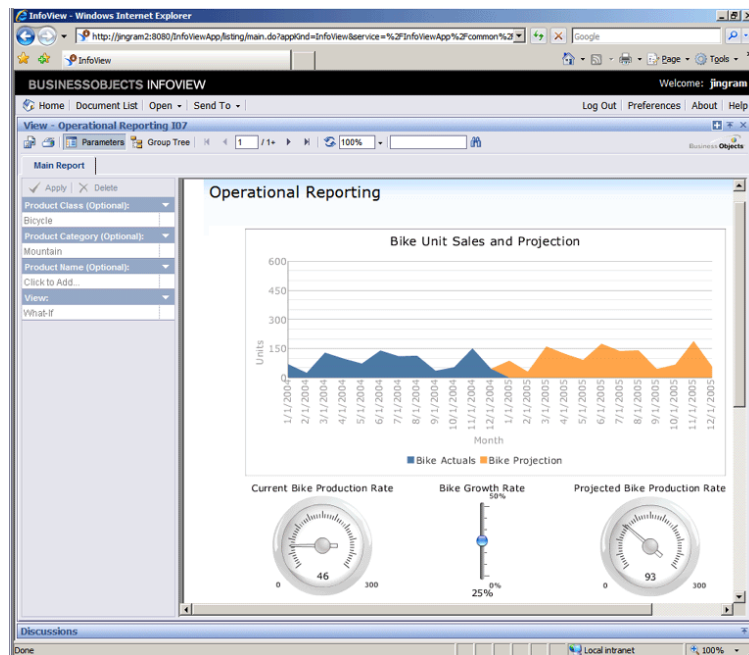


Figure 3: InfoView – End User Interface

BusinessObjects Live Office

Integration with Microsoft Office via BusinessObjects™ Live Office provides support for the major recent versions of Office, including Microsoft Office 2000, 2003, XP, and 2007. Also, Live Office allows for easily embedding accurate, refreshable corporate data within Microsoft PowerPoint, Excel, and Word documents.

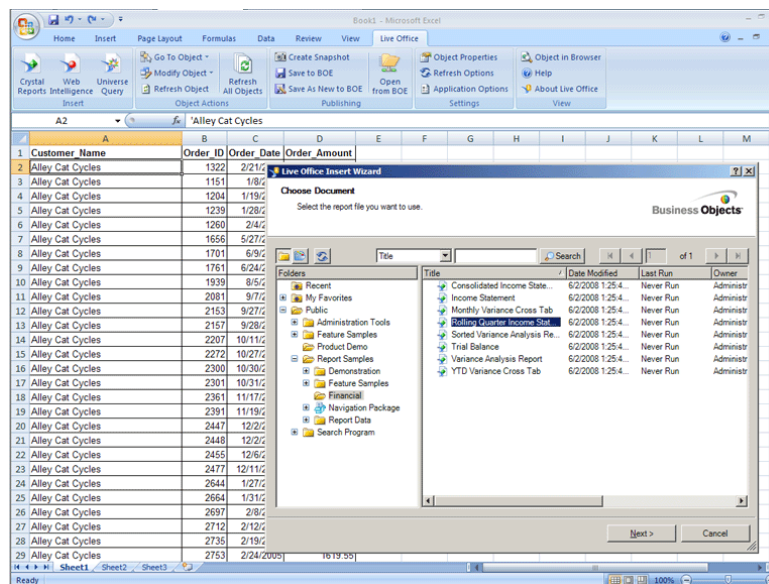


Figure 4: BusinessObjects Live Office – End User Interface

Collaboration

Threaded discussions – a fully integrated feature of the InfoView environment – enable users to create and maintain comments on any report accessible in Crystal Reports Server.

On-Demand and Offline Report Consumption

Use crystalreports.com to provide secure report access via the Web for users inside and outside your organization. Or explore your report data interactively – even offline – with our standalone Crystal Reports Viewer. crystalreports.com and Crystal Reports Viewer are not included with Crystal Reports Server 2008.

SCHEDULE AND DELIVER REPORTS

Report Scheduler

Set up reports to run at specific times or based on specific events. Plus, schedule reports to generate in specific formats such as Excel, PDF, and RTF.

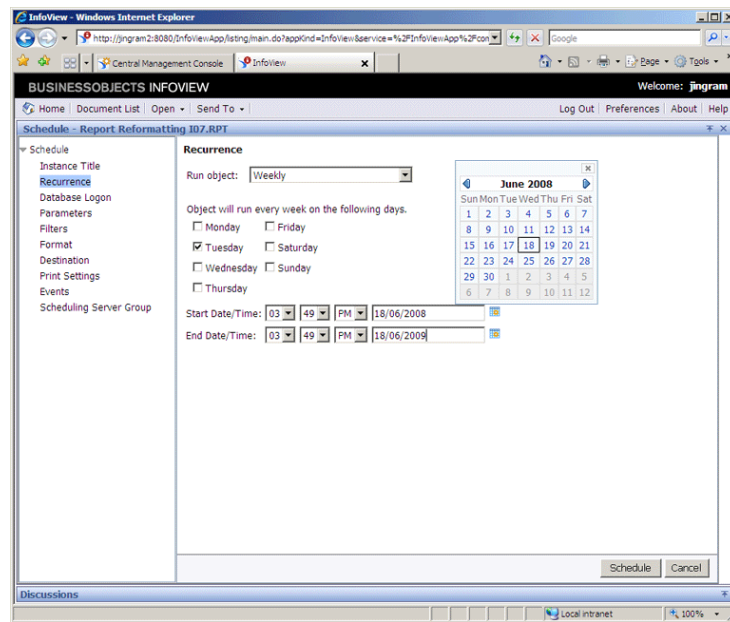


Figure 5: Report Scheduling – Administrator Interface

Report Object Repository

Manage report-related formulas, SQL commands, text objects, and images in the object-oriented repository.

SECURITY AND SUPPORT

Single Sign-On

Reports can be integrated into an existing security infrastructure so users only have to sign on once.

Complete Integration with BusinessObjects Enterprise Architecture

Enjoy seamless continuity between all of the applications within your business intelligence technology suite. Scalability is easier when everything is integrated.

businessobjects.com

