

CRYSTAL REPORTS SERVER 2008

WHAT'S NEW

Key Benefits

Securely view, share, schedule, and deliver reports designed in Crystal Reports 2008.

Give all end-users access to interactive reports.

Embed the latest corporate data in Microsoft Office documents.

Explore interactive report data even offline with the standalone Crystal Reports Viewer.

Leverage the intuitive Central Management Console.

Gain ease of scalability with a more flexible licensing model.

INTRODUCING CRYSTAL REPORTS SERVER 2008

Today business models change, market competition increases at an alert pace, and companies continuously evolve their products to meet the latest consumer needs. To make strong decisions and drive performance excellence in your organization, it's no longer sufficient to access data via static reports. Whether part of a functional department or a larger workgroup in a small to mid-size organization, you need information that's reliable and easy to find and interpret – so you can make fact-based decisions and win in the marketplace. And you want to put this information in the hands of all your business users – ideally with minimal IT resources. Business Objects, an SAP company, has designed Crystal Reports® Server 2008 to do that.

CRYSTAL REPORTS SERVER 2008 OVERVIEW

Crystal Reports Server 2008 is a complete report management solution that allows departments and small to mid-size organizations to securely view, print, share, schedule, and deliver interactive reports via email, portals, and Microsoft Office applications. Crystal Reports Server 2008 is a follow-up release to Crystal Reports Server XI Release 2.

Crystal Reports Server 2008 enables you to:

- Securely share, schedule, and deliver interactive reports designed in Crystal Reports 2008
- Empower all business users to view, explore, and share reports over the Web, in emails or Microsoft Office documents, and make better decisions
- Integrate with BusinessObjects™ Live Office to access the latest, refreshable, information right from Microsoft Office documents
- Be more productive with the intuitive, redesigned administrative console
- Choose how you consume reports – online, integrated in portals or Microsoft Office documents, through email, or offline with Crystal Reports Viewer
- Explore reports on your desktop even offline with the standalone Crystal Reports Viewer
- Build your deployment of choice with the new, more flexible licensing model
- Scale up easily as your business grows with our flexible licensing model and easy migration to BusinessObjects Edge Series or BusinessObjects Enterprise

TRANSFORMING DATA INTO ACTIONABLE INFORMATION

Crystal Reports Server 2008 is fully compatible with Crystal Reports 2008 and supports all of the new features found in the latest version of our report design tool.

Sold as a separate named user license from Crystal Reports Server 2008, Crystal Reports 2008 is our latest innovation in report design that provides you with a comprehensive set of features to save time and decrease cost of ownership for your organization. With Crystal Reports 2008, you can:

- Create highly formatted, interactive reports from any data source

- Create reports with stunning visualizations for high-impact presentations
- Make your reports interactive with on-report sorting, interactive parameters, and what-if scenarios created in Xcelsius®
- Develop powerful data mashups by combining data from on and off-premise locations
- Minimize IT and developer work with new high-productivity designer features

For a complete list of the features and capabilities in Crystal Reports 2008, please visit our Web site at www.businessobjects.com/crystalreports2008.

MANAGE, SHARE, AND DELIVER CRITICAL BUSINESS REPORTS

Crystal Reports Server 2008 is an efficient alternative to manual report processing and delivery. It allows you to securely deploy and manage critical business reports – with minimal impact on your network and IT resources.

Flexible Access to Compelling Information

Crystal Reports Server 2008 reduces reliance on your IT department by enabling end users to easily access interactive reports on the Web, automatically via email, or embedded in Microsoft Outlook, Word, Excel, or PowerPoint documents.

Crystal Reports Server 2008 helps end users to:

- **Find answers to their business questions quicker** by getting to the information they need with on-report interactive parameters and sorting – online or offline
- **Make fact-based decisions** by modeling the potential outcome of their decisions with interactive models embedded in reports
- **Act faster** with operational reports that communicate with back-office systems
- **Deliver more compelling presentations** by embedding reports that include interactive charts and graphs, or dynamic video files

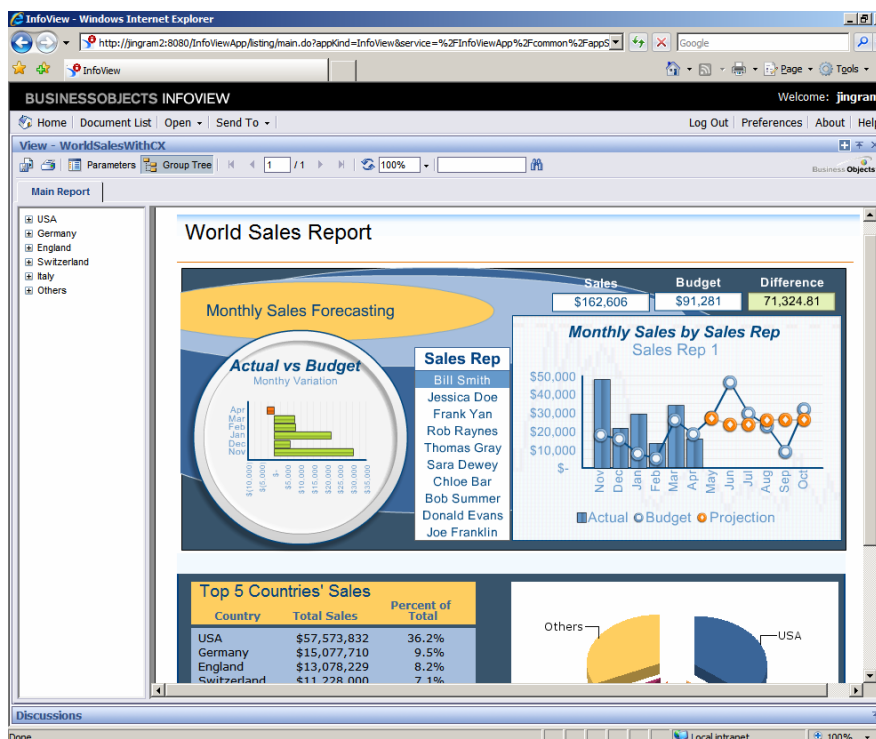


Figure 1: InfoView Interactive Report

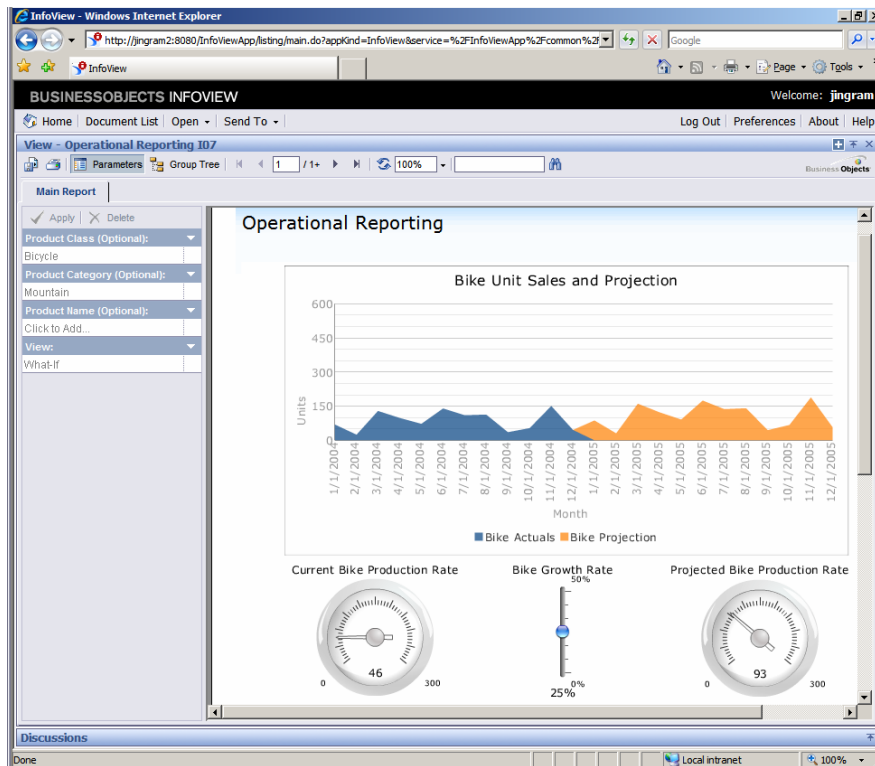


Figure 2: InfoView What-If Interactive Parameters

End users can view, filter, refresh, and navigate reports to quickly using the variety of included viewers. And end users can be granted the right to export reports to other formats, such as PDF, editable RTF, and Excel.

Integration with Microsoft Office via Live Office

The Live Office feature in Crystal Reports Server 2008 provides integration with the Microsoft Office suite, letting you:

- Easily embed accurate, refreshable corporate data in Microsoft PowerPoint, Excel, and Word documents
- Securely share Microsoft Office documents over the Web for collaborative decision-making
- Increase data quality by using formatted data from the same trusted semantic layer that supports your query, reporting, and analysis system

Intuitive Administration

The Central Management Console (CMC) ensures greater flexibility and a higher granularity level to administrators managing reporting deployments. The key areas of improvement include:

- New and intuitive navigation, workflows, and menu structure for better usability
- Improved user and group management
- Bulk action support, enabling you to execute actions on multiple selected objects (for example to add multiple objects to a category, update properties for multiple Crystal Reports, etc.)
- Custom access levels, let you tailor group rights for targeted users, reducing the complexity of security management
- Instance manager, letting you manage job scheduling, is now integrated into the CMC

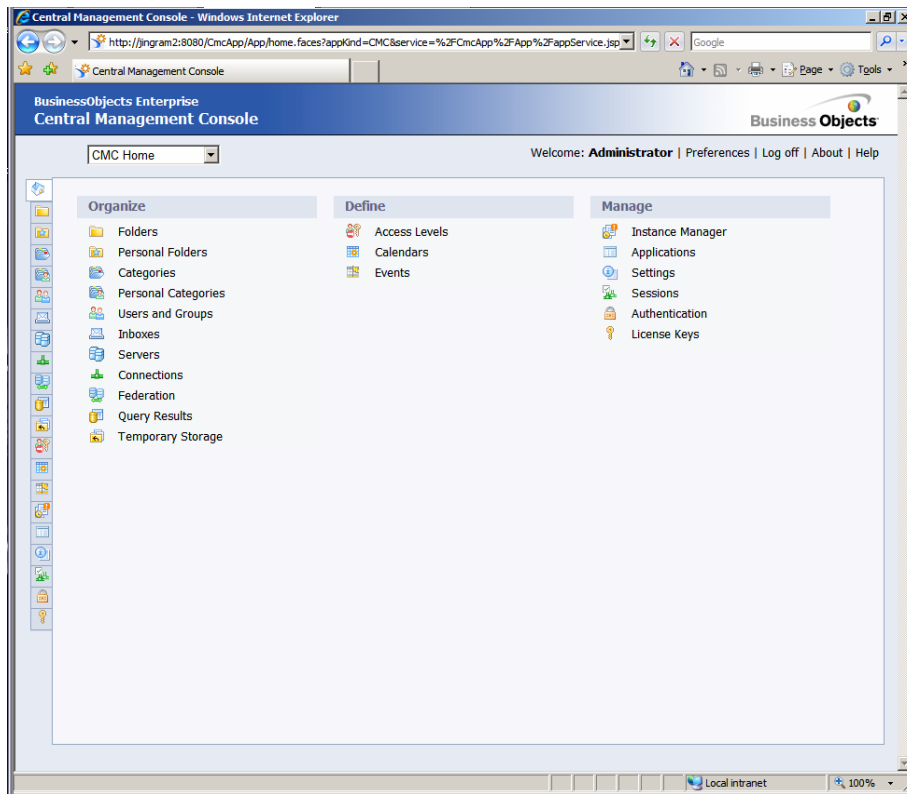


Figure 3: Central Management Console User Interface

FLEXIBLE LICENSING SUPPORTS ANY IMPLEMENTATION

Crystal Reports Server 2008 delivers a new, more flexible licensing model that enables you to scale up your implementation more affordably. Key benefits include:

- **Flexible data access** – Accommodate all categories of users by combining named user licenses and concurrent access licenses
- **Guaranteed user access** – Whether it's a busy quarter-end or just regular peak times throughout the fiscal year, provide guaranteed access to users who need it the most, so they can finalize critical tasks such as financial, sales, or shareholder reports and presentations
- **Economical way to scale up your implementation** – The new named user licensing model is attractively priced to meet the tightest budget requirements to help you deliver more user access to critical business information

PEACE OF MIND WITH PROVEN, TRUSTED PLATFORM

Crystal Reports Server 2008 is an integral part of our comprehensive business intelligence (BI) product suite. It shares the same underlying infrastructure as BusinessObjects Enterprise XI 3.0, a proven, trusted BI platform. If your business grows and your needs evolve to require advanced BI tools such as ad hoc query, analysis, dashboards, scorecards, or online analytical processing (OLAP) capabilities, you can easily migrate your existing Crystal Reports Server 2008 implementation and settings to BusinessObjects Edge Series 3.0 or BusinessObjects Enterprise XI 3.0. At this time, Crystal Reports Server 2008 is available for deployment on a Windows 2003 platform, a Red Hat 4.0 Advanced/Enterprise Server, or SuSe Linux 9.0 or 10.0 Enterprise Server platforms.

To learn more about Crystal Reports Server 2008, visit our Web site at http://www.businessobjects.com/product/catalog/crystalreports_server/.

WHAT'S CHANGED

The following features have changed from Crystal Reports Server XI Release 2:

- **Report Designer Tool** – No report designer tool is included with Crystal Reports Server 2008. Customers will purchase Crystal Reports 2008 separately. This provides you with the flexibility to acquire the number of Crystal Reports 2008 designer tools that meets the specific requirements of your deployment.
- **SharePoint PIK (Portal Integration Kit)** – This capability will be added to Crystal Reports Server 2008 at a later time and will be delivered via a service pack.

SUMMARY

Crystal Reports Server 2008 helps you empower business users to access and explore any data interactively – without dependencies on IT. Evolve your business with a consistent, economical, simple way of viewing, exploring and sharing information securely inside and outside your organization – so you can keep your overall IT costs in check and focus on maximizing your organization's business performance. And you are assured that your investment is protected in the long run with a Crystal Reports solution that can be easily migrated to the best mid-market and large enterprise solutions from Business Objects.



businessobjects.com

© 2008 Business Objects. All rights reserved. Business Objects owns the following U.S. patents, which may cover products that are offered and licensed by Business Objects: 5,555,403; 5,857,205; 6,289,352; 6,247,008; 6,490,593; 6,578,027; 6,831,668; 6,768,986; 6,772,409; 6,882,998; 7,139,766; 7,299,419; 7,194,465; 7,222,130; 7,181,440 and 7,181,435. Business Objects and the Business Objects logo, BusinessObjects, Business Objects Crystal Vision, Business Process On Demand, BusinessQuery, Crystal Analysis, Crystal Applications, Crystal Decisions, Crystal Enterprise, Crystal Insider, Crystal Reports, Desktop Intelligence, Inight, the Inight Logo, LinguistX, Star Tree, Table Lens, ThingFinder, Timewall, Let there be light, Metify, NSite, Rapid Marts, RapidMarts, the Spectrum Design, Web Intelligence, Workmail and Xcelsius are trademarks or registered trademarks in the United States and/or other countries of Business Objects and/or affiliated companies. All other names mentioned herein may be trademarks of their respective owners. Part # WS005-E